



Segue Group Company overview

Segue Group Co., Ltd
September 2018

At-a-Glance



Founded	J's Communication Apr. 1995 in Osaka Segue Group Dec. 2014 in Tokyo
Founders	Yasuyuki Aisu
Capital	¥516.4 million(as of June 2018)
Headquarters	Tokyo
Employees	372 (as of June 2018) (Consolidated)
Revenues	¥7.7 billion + (Consolidated)
Business activities	Distribution
	Integration (network, security, server, and storage)
	Engineer resource service
	Managed Service
Large Customers	NTT Group, NISSHO ELECTRONICS, NEC Group
Stock Listings	Tokyo Stock Exchange JASDAQ Standard (Code:3968)

Segue Group



1. VoIP System Implementation
2. Construction Service
3. System Integration



1. Help Desk Support
2. Monitoring Service
3. Maintenance Support



1. Distribution Business
2. Solution Offering & Services
3. System Integration
4. Security Product Development
(Network Isolation)



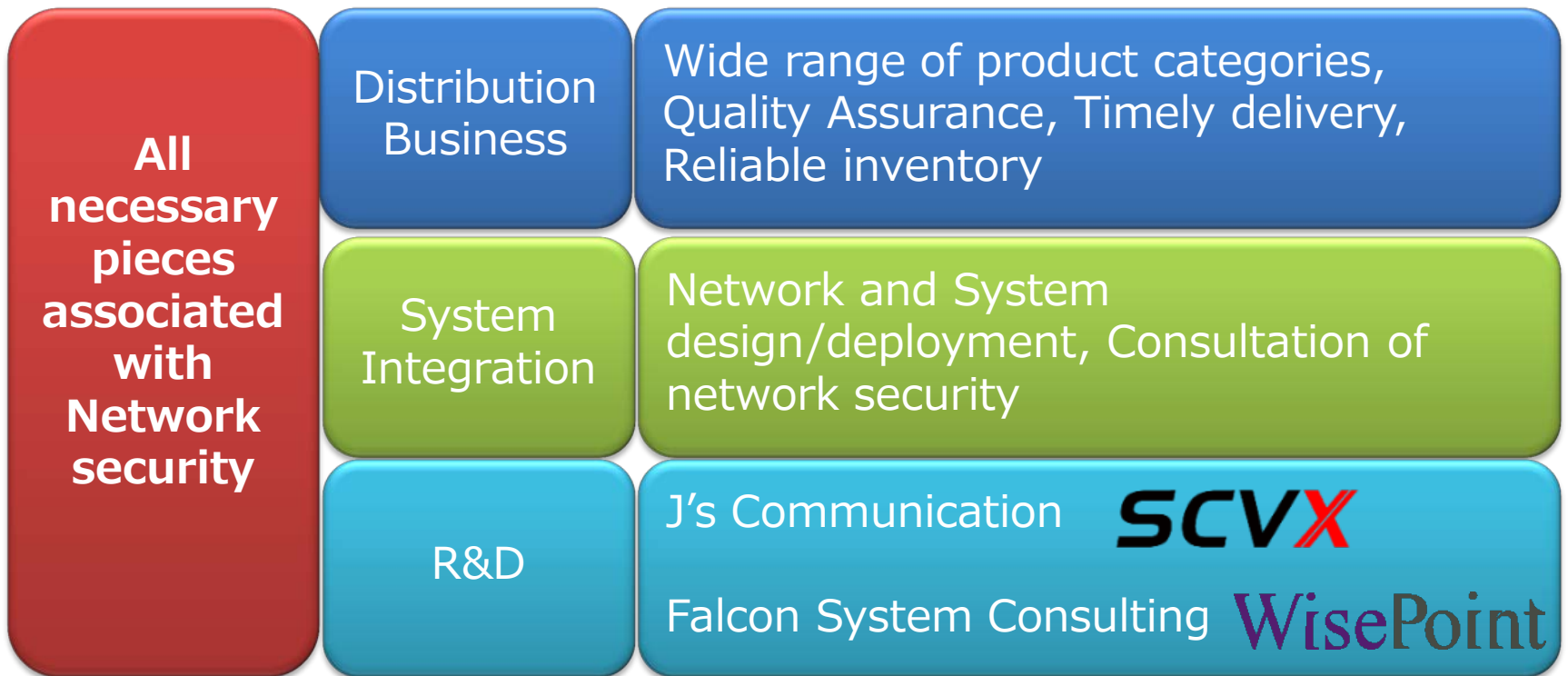
1. Human Resource Service
2. System Integration



1. Security Product Development
(Authentication)

Business Domain

Network Security Provider



Product Portfolio

As a distributor

JUNIPER
NETWORKS



RUCKUS™



DARKTRACE

SOPHOS

RAPID7



Diamond IP



Barracuda®

Soliton®

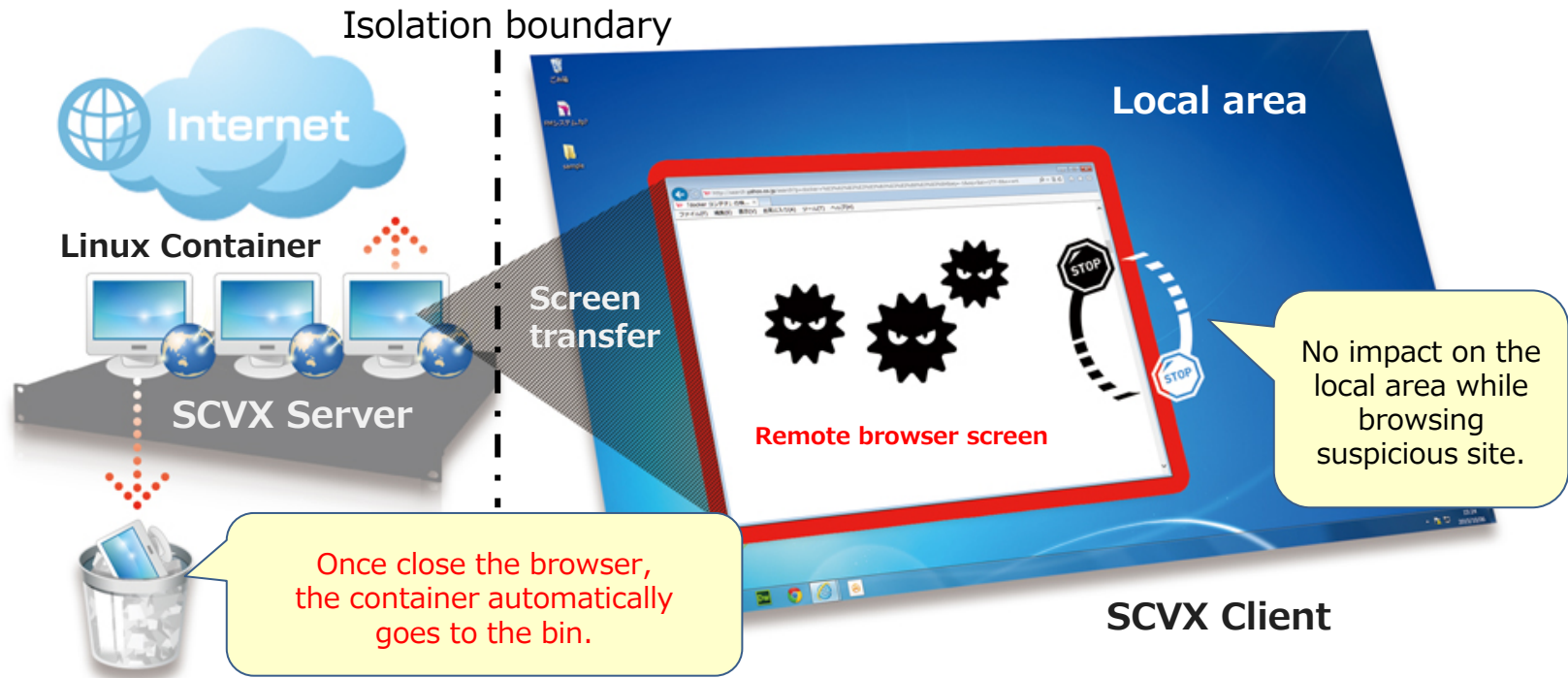


Pulse Secure

For Solution Product

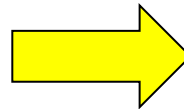
Cisco, Palo Alto, A10, HP etc

In house Development SCVX Secure Browser



SCVX Secure Browser

The isolation of Internet access



- Anti-malware
- Information leak prevention

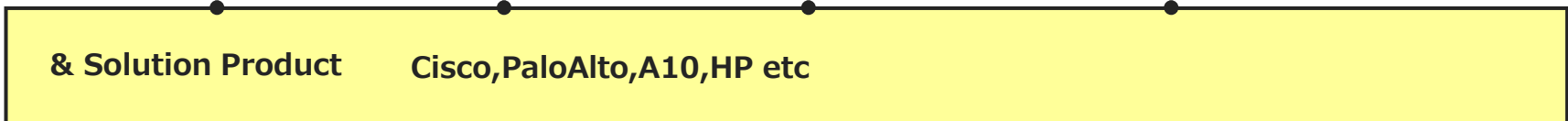
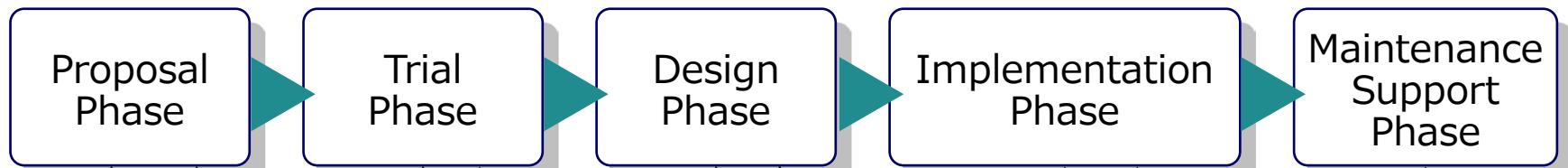
For those who possess highly confidential data.
E.g. Government, Hospital, School...

Value-added Integration Service

- From the first action, till the end
- Tailor our services to meet partners' expectations

- Visit partners or/and end-users
- Clarify the needs
- Define the needs
- Propose & Trial
- Quote
- Design the network architecture
- Install the system
- Check & Finalize
- Done

- Support Desk
- Monitoring Service



Support Structure

24/365 Call Center,
Dispatch and monitoring service
Service Area : Nation wide

